



Society for Growing Australian Plants (Queensland Region) Inc.

Cairns Branch
PO Box 199
Earlville Qld 4870

Newsletter No. 100
June 2010

Society Office Bearers

Chairperson	Tony Roberts	40 551 292
Vice Chairperson	Mary Gandini	40 542 190
Secretary	David Warmington	40 443 398
Treasurer	Robert Jago	40 552 266

Membership Subscriptions- Qld Region- Renewal \$30.00, New Members \$35, each additional member of household \$2.00 **Student** - Renewal \$20 New Members \$25.00, **Cairns Branch Fees** - \$10.00 Full Year

To access our Library for the loan of publications, please contact David Warmington
Newsletter Editor: Tony Roberts travelling_botanist@yahoo.com.au

Dates to remember

Cairns Branch Meetings and Excursions – third Saturday of each month.

NEXT MEETING AND EXCURSION 19/20 June 2010 at Cooktown.

Tablelands Branch Excursion– Sunday following the meeting on the fourth Wednesday of the month. Any queries please contact Chris Jaminon 4095 2882 or hjaminon@bigpond.com

Townsville Branch

General Meeting Please contact John Elliot: jw-elliott@aapt.net.au for more information

Crystal Ball

June - Cooktown
July - White Mountains
Aug - Redden Island
Sept – Upper Harvey Ck
Oct - Barron Falls' boardwalk/Kuranda
Nov - Ellie Point

Cooktown

The next outing is to Cooktown. The routine will follow the established format for Cooktown visits: Work 8.30 till 4 Saturday and 8.30 till midday Sunday. Could members attending please contact Pauline on 4047 1577 for further details and so that she can provide numbers before hand.

May Excursion Report

The walk began in open woodland with *Corymbia citriodora*, *Eucalyptus crebra* & *Eucalyptus portuensis*. With increasing altitude *Corymbia abergiana* & *Eucalyptus cloeziana* become increasingly conspicuous. The substrate throughout the walk was granite.

The following notes are on a small plant that attracted attention at lunch on the summit of Mt. Ida to the east of Herberton during last month's outing. Notice that the Type Collection was made by Banks & Solander at Cape Grafton in June 1770.

ORDER: LAMIALES

FAMILY: Acanthaceae

NAME: *Brunoniella acaulis* subsp. *acaulis*

SYNONYMS: *Aporuella acaulis*; *Ruellia acaulis*

TYPE: Cape Grafton, Banks & Solander June 1770.

COMMON NAME: Blue Yam

HABITAT: Open forest & woodlands in rocky areas from near sea level to in excess of 1,000 metres altitude on both granite & metamorphic substrates.

PRONOUNCED: broo-no-nee-ELL-a a-KAW-lis

ETYMOLOGY: Derived from *acauline* without a stem.

CONSERVATION STATUS: A common native species.

DESCRIPTION: A prostrate herb usually with a very short unbranched stem but occasionally with a few short decumbent branches arising from within the leaves; roots with elliptical underground tubers 20-50 mm. long x 8-10 mm. in diameter; leaves simple, opposite, with each leaf pair attached at 90° to the adjacent pair, usually in a basal rosette, leaf blade 20-65 mm. x 10-25mm., petioles 8-20 mm. long, cystoliths linear; inflorescence a solitary flower on a long pedicle arising from the axils of the basal rosette of leaves, rarely with some axillary flowers on short decumbent branches; corolla blue, funnel-shaped 20-30 mm. diameter; stamens 2; fruit a capsule 13-17 mm. long..

DISTRIBUTION: Western District of New Guinea (a single record) to north eastern Australia south to Port Curtis.

NOTES: One of several species of local plants collected at Cape Grafton by Banks & Solander in 1770. This species is locally common in the Cairns Region especially on clay soils in eucalypt woodland with *Eucalyptus platyphylla* between Port Douglas & Cairns. It is also common on coastal headlands and hills and in open woodlands with *Melaleuca viridiflora* adjacent to mangroves. The narrow elliptical underground tubers were apparently eaten by local aboriginal groups either raw or roasted and are said to taste like Sweet Potato (*Ipomoea batatas*). On Mt. Ida to the east of Herberton it was growing in low open woodland dominated by *Corymbia abergiana* and *Eucalyptus portuensis*.

REFERENCES:

Barker, R.M.; *A Taxonomic Revision of Australian Acanthaceae*; Journal of the Adelaide Botanic Gardens; Vol, 9; 99-102 (1986)

Bailey, F.M.; *Comprehensive Catalogue of Queensland Plants*; 373-374 (1909)

Bailey, F.M.; *Queensland Flora Part 4*; 1145 (1901)

Baines J.A.; (1981) *Australian Plant Genera*; Society for Growing Australian Plants.)

Plants Observed Mount Ida east of Herberton

CLASS FAMILY Code&TAXON

COMMON NAME

FERNS & ALLIES

Adiantaceae

Adiantum hispidulum var. *hispidulum*

Rough Maidenhair Fern

Cheilanthes brownii

Cheilanthes tenuifolia

Rock Fern

Davalliaceae

Davallia denticulata

Polypodiaceae

Drynaria rigidula

Basket Fern

Goniophlebium subauriculatum

GYMNOSPERMS

Cupressaceae

Callitris intratropica

Cypress Pine

FLOWERING PLANTS-DICOTYLEDONS

Acanthaceae

Brunoniella acaulis subsp. *acaulis*

Blue Yam



Rostellularia adscendens var. *hispida*

Apiaceae

Platysace valida

Asteraceae



Acmella grandiflora* subsp. *brachyglossa

**Ageratum conyzoides*

**Bidens pilosa* var. *pilosa*

**Crassocephalum crepidioides*

Cyanthillium cinereum

Epaltes australis

Blue Top

Cobbler's Peg

Thickhead

Purple Fleabane

Epaltes



Helichrysum newcastlianum

Peripleura diffusa

* *Praxelis clematidea*

Praxelis

Bignoniaceae



Pandorea linearis

Byttneriaceae

Keraudrenia lanceolata

Caesalpiniaceae



Chamaecrista nomame var *nomame*

Campanulaceae



Wahlenbergia caryophylloides

Forest Bluebell

Capparaceae

Capparis canescens

Casuarinaceae

Allocasuarina littoralis

Allocasuarina torulosa

Black She Oak

Rose She Oak; Forest She Oak

Celastraceae



Maytenus disperma

Orange Bark

Clusiaceae

Hypericum gramineum

Small Saint John's Wort

Dilleniaceae



Hibbertia longifolia



Hibbertia melhanioides

Ericaceae



Acrotriche aggregata

Melichrus adpressus

Melichrus urceolata

Jam Tarts

Fabaceae

Crotalaria montana var. *angustifolia*

Flemingia parviflora



Hovea nana

Indigofera bancroftii

**Macroptilium atropurpureum*

Sirato

<i>*Styloanthus humilis</i>	Stylo
<i>Zornia floribunda</i>	
<i>Zornia muriculata</i> subsp <i>muriculata</i>	
Haloragaceae	
<i>Gonocarpus acanthocarpus</i>	
Lamiaceae	
<i>Clerodendrum longiflorum</i> var. <i>glabrum</i>	Witches Tongues
Loganaceae	
<i>Mitrasacme oasena</i>	
Mimosaceae	
<i>Acacia aulacocarpa</i>	Hickory Wattle
<i>Acacia calyculata</i>	
<i>Acacia falcata</i>	
<i>Acacia flavescens</i>	Red Wattle
<i>Acacia multisiliqua</i>	
<i>#Acacia podalyriifolia</i>	Queensland Silver Wattle
<i>Acacia whitei</i>	
Myrtaceae	
<i>Corymbia citriodora</i>	Lemon Scented Gum
<i>Eucalyptus abergiana</i>	Range Bloodwood
<i>Eucalyptus cloeziana</i>	Gympie Messmate
<i>Eucalyptus crebra</i>	Red Ironbark
<i>Eucalyptus portuensis</i>	Northern White Mahogany
<i>Lophostemon grandiflorus</i>	
<i>Lophostemon suaveolens</i>	Swamp Mahogany
<i>Syncarpia glomulifera</i> subsp <i>glomulifera</i>	Turpentine
Oxalidaceae	
<i>Oxalis corniculata</i>	Creeping Oxalis
Phyllanthaceae	
<i>Breynia oblongifolia</i>	Coffee Bush



Phyllanthus dallachyanus



Poranthera microphylla

Picrodendraceae

Petalostigma pubescens

Quinine Berry

Pittosporaceae

Bursaria incana

Bursaria spinosa subsp. *spinosa*

Blackthorn

Proteaceae

Grevillea glauca

Hakea plurinervis

Queensland Hakea

Persoonia falcata

Northern Geebung

Rubiaceae



Pogonolobus reticulatus

Santalaceae

Exocarpos cupressiformis

Native Cherry

Sapindaceae

Dodonaea lanceolata var. *subsessilifolia*

Stackhousiaceae



Stackhousia intermedia

Stylidiaceae



Stylidium graminifolium

Grass Trigger Plant

FLOWERING PLANTS-MONOCOTYLEDONS

Agavaceae

**Agave vivipara*

Amaryllidaceae

Crinum angustifolium

Field Lily

Colchicaceae

Iphigenia indica



Schelhammera multiflora

Cyperaceae

Abildgaardia ovata

Cyperus sp.

Gahnia aspera

Haemodoraceae

Haemodorum coccineum

Blood Lily

Hemerocallidaceae

Dianella caerulea var. *vannata*

Blue Flax Lily

Geitonoplesium cymosum

Scrambling Lily

Hypoxidaceae

Curculigo ensifolia

Johnsoniaceae



Tricoryne anceps* subsp. *anceps

Laxmanniaceae

Lomandra multiflora

Many-flowered Matrush

Orchidaceae



Caladenia carnea

Dipodium ensifolium

Pterostylis sp.

Leafy Hyacinth Orchid

Poaceae

Arundinella nepalensis

Reed Grass

Cleistochloa subjuncea

Cymbopogon bombycinus

Silky Oil Grass

Eriachne humilis

Heteropogon contortus

Bunch Spear Grass

Heteropogon triticeus

Giant Spear Grass

**Melinis minutiflora*

Molasses Grass

**Melinis repens*

Red Natal Grass

Schizachyrium fragile

Fire Grass

Themeda triandra

Kangaroo Grass

Xanthorrhoeaceae

Xanthorrhoea johnsonii

Forest Grasstree

Plants Collected by Banks & Solander in 1770 from North Queensland

Bob Jago

Dicotyledons

Acanthaceae

Acanthus ilicifolius L.

Loc: Endeavour River. This species is common in the Cairns Region.

Brunoniella acaulis (R.Br.) Bremek

Type Loc: Bustard Bay, Bay of Inlets & Cape Grafton. This species occurs in the Cairns Region.

Hygrophila angustifolia R.Br.

Loc: Endeavour River. This species occurs in the Cairns Region.

- Nelaonia campestris* R.Br.
Loc: Endeavour River. This species occurs in the Cairns Region.
- Pseuderanthemum variabile* (R.Br.) Radlk.
Loc: Endeavour River. This species is common in the Cairns Region.
- Rostellularia adscendens* (R.Br.) F.Muell.
Loc: Endeavour River. This species occurs in the Cairns Region.
- Aizoaceae**
Sesuvium portulacastrum (L.) L.
Loc: Endeavour River. This species is common in the Cairns Region.
- Amaranthaceae**
Deeringia arborescens (R.Br.) Druce
Loc: Endeavour River. This species occurs in the Cairns Region.
- Anacardiaceae**
Blepharocarya involucrigera F.Muell.
Loc: Endeavour River. This species is common in the Cairns Region.
- Buchanania arborescens* (Blume) Blume
Loc: Endeavour River. This species is common in the Cairns Region.
- Pleiogynium timoriense* (DC.) Leenh.
Loc: Endeavour River. This species is common in the Cairns Region.
- Apiaceae**
Centella asiatica (L.) Urb.
Loc: Endeavour River. This species is common in the Cairns Region.
- Apocynaceae**
Alyxia spicata R.Br.
Loc: Cape Grafton & Endeavour River. This species is common in the Cairns Region.
- Cynanchum pedunculatum* R.Br.
Loc: Endeavour River.
- Dischidia nummularia* R.Br.
Loc: Endeavour River. This species is common in the Cairns Region.
- Hoya australis* subsp. *australis* R.Br. ex Traill
Type Loc: Cape Grafton also collected from the Endeavour River. This species is common in the Cairns Region.
- Parsonsia velutina* R.Br.
Loc: Endeavour River. This species is common in the Cairns Region.
- Sarcostemma viminalis* subsp. *brunonianum* (Wight & Arn.) P.I.Forst.
Loc: Cape Grafton & Endeavour River. This species is common in the Cairns Region.
- Tabernaemontana orientalis* R.Br.
Loc: Endeavour River & Lookout Point. This species is common in the Cairns Region.
- Aristolochiaceae**
Aristolochia acuminata Lam.
Loc: Endeavour River. This species occurs in the Cairns Region.
- Araliaceae**
Schefflera actinophylla (Endl.) Harms
Loc: Endeavour River. This species is common in the Cairns Region.
- Tachymene hookeri* (Domin) A.E.Holland
Loc: Endeavour River.
- Asteraceae**
Acmella grandiflora var. *brachyglossa* (Benth.) R.K. Jansen
Loc: Endeavour River.
- Adenostemma lavenia* (L.) Kuntze
Loc: Endeavour River.
- Allopterigeron filifolius* (F.Muell.) Dunlop
Loc: Endeavour River.
- Blumea saxatilis* Zoll. & Moritzi
Loc: Endeavour River.
- Cyanthillium cinereum* (L.) H.Rob.
Loc: Endeavour River. This species is common in the Cairns Region.

**Elephantopus scaber* L.

Loc: Endeavour River. This species is common in the Cairns Region. Regarded as naturalised; possibly introduced by Endeavour visit.

Epaltes australis Less.

Loc: Endeavour River. This species is common in the Cairns Region.

Helichrysum rupicola DC.

Loc: Cape Grafton & Endeavour River. This species is common in the Cairns Region.

Minuria macrorhiza (DC.) Lander

Loc: Endeavour River.

Olearia arguta (R.Br.) Benth.

Loc: Endeavour River.

Peripleura hispidula var. *setosa* (N.T.Burb.) G.I.Nesom

Loc: Endeavour River. This species occurs in the Cairns Region.

Phacellothrix cladochaeta (F.Muell.) F.Muell.

Loc: Endeavour River.

Pterocaulon serrulatum var. *serrulatum* Guillaumin

Loc: Palm Island. This species is common in the Cairns Region.

Wollastonia biflora (L.) DC.

Loc: Cape Grafton & Endeavour River. This species is common in the Cairns Region.

Xerochrysum bracteatum (Vent.) Tzvelev

Loc: Endeavour River.

Avicenniaceae

Avicennia marina subsp. *eucalyptifolia* (Valeton) J.Everett

Loc: Endeavour River. This species is common in the Cairns Region.

Bignoniaceae

Deplanchea tetraphylla (R.Br.) F.Muell.

Loc: Endeavour River. This species is common in the Cairns Region.

Dolichandrone alternifolia (R.Br.) Seem.

Loc: Endeavour River.

Boraginaceae

Heliotropium sarmentosa (Lam.) Craven

Loc: Endeavour River. This species occurs in the Cairns Region.

Burseraceae

Canarium australasicum (F.M. Bailey) Leenh.

Loc: Cape Grafton. This species occurs in the Cairns Region.

Byblidaceae

Byblis liniflora Salisb.

Loc: Endeavour River. This species occurs in the Cairns Region.

Byttneriaceae

Abroma molle DC.

Loc: Endeavour River. This species is common in the Cairns Region.

Commersonia bartramia (L.) Merr.

Loc: Endeavour River. This species is common in the Cairns Region.

Caesalpiniaceae

Chamaecrista nomaname var. *nomame* (Siebold) H. Ohashi

Loc: Endeavour River. This species is common in the Cairns Region.

Cynometra iripa Kostel

Loc: Endeavour River. This species is common in the Cairns Region.

Erythrophleum chlorostachys (F.Muell.) Baill.

Loc: Endeavour River. This species occurs in the Cairns Region.

Campanulaceae

Wahlenbergia communis Carolin

Loc: Endeavour River.

Capparaceae

Capparis lucida (DC.) R.Br. ex Benth.

Loc: Endeavour River. This species is common in the Cairns Region.

Chenopodiaceae

Salsola kali L.

Loc: Endeavour River. This species occurs in the Cairns Region

Chrysobalanaceae

Parinari nonda F.Muell. ex Benth.

Loc: Endeavour River.

Cochlospermaceae

Cochlospermum gillivraei Benth.

Loc: Endeavour River. This species is common in the Cairns Region.

Combretaceae

Lumnitzera littorea (Jack) F.Voigt

Loc: Endeavour River. This species occurs in the Cairns Region.

Terminalia muelleri Benth.

Loc: Endeavour River. This species occurs in the Cairns Region.

Convolvulaceae

Cuscuta chinensis Lam.

Loc: Cape Grafton.

Evolvulus alsinoides var. *decumbens* (R.Br.) Ooststr.

Loc: Cape Grafton & Endeavour River. This species is common in the Cairns Region

Ipomoea eriocarpa R.Br.

Loc: Endeavour River.

**Ipomoea indica* (Burman) Merr.

Loc: Endeavour River. This species is common in the Cairns Region. Regarded by BRI as naturalised.

Ipomoea macrantha Roem. & Schult.

Loc: Endeavour River. This species occurs in the Cairns Region.

Ipomoea mauritiana Jacq.

Loc: Palm Island. This species occurs in the Cairns Region

Ipomoea nil (L.) Roth

Loc: Booby Island.

Lepistemon urceolatus (R.Br.) F.Muell.

Loc: Endeavour River. This species is common in the Cairns Region.

Xerostegia tridentata (L.) D.F.Austin & Staples

Loc: Endeavour River. This species occurs in the Cairns Region

Cucurbitaceae

Diplocyclos palmatus (L.) C. Jeffrey

Loc: Endeavour River. This species is common in the Cairns Region.

Zehneria mucronata (Blume) Miq.

Loc: Endeavour River. This species occurs in the Cairns Region.

Dilleniaceae

Dillenia alata (R.Br. ex DC.) Martelli

Loc: Endeavour River. This species is common in the Cairns Region.

Hibbertia banksii (R.Br. ex DC.) Benth.

Loc: Endeavour River. This species occurs in the Cairns Region.

Droseraceae

Drosera banksii R.Br. ex DC.

Loc: Endeavour River.

Drosera burmanni Vahl.

Loc: Endeavour River & Lizard Island. This species occurs in the Cairns Region.

Drosera indica L.

Loc: Cape Grafton & Endeavour River. This species occurs in the Cairns Region.

Drosera petiolaris R.Br. ex DC.

Loc: Endeavour River. This species occurs in the Cairns Region.

Ericaceae

Leucopogon lavarackii Pedley

Loc: Endeavour River.

Leucopogon ruscifolius R.Br.

Loc: Endeavour River. This species occurs in the Cairns Region.

Euphorbiaceae

Chamaesyce atoto (G.Forst.) Croizat

Loc: Endeavour River. This species occurs in the Cairns Region.

Chamaesyce mitchelliana (Boiss.) D.C.Hassal

Loc: Endeavour River. This species occurs in the Cairns Region.

Claoxylon hillii Benth.

Loc: Endeavour River. This species is common in the Cairns Region.

Homalanthus novoguineensis (Warb.) K.Schum.

Loc: Endeavour River. This species is common in the Cairns Region.

Macaranga involucrata var. *mallotoides* (F.Muell.) L.M. Perry

Loc: Endeavour River. This species is common in the Cairns Region.

Macaranga tanarius (L.) Muell. Arg.

Loc: Endeavour River. This species is common in the Cairns Region.

Mallotus ficifolius (baill.) Pax & K.Hoffm.

Loc: Endeavour River. This species is common in the Cairns Region.

Mallotus philippensis (Lam.) Muell.Arg.

Loc: Endeavour River. This species is common in the Cairns Region.

Mallotus polyadenos F.Muell.

Loc: Endeavour River. This species is common in the Cairns Region.

Microstachys chamaelea (L.) A.juss. ex Hook.f.

Loc: Endeavour River. This species is common in the Cairns Region.

Shonia tristigma subsp. *borealis* Halford & R.J.F.Hend.

Loc: Endeavour River.

Tragia finalis P.I.Forst

Loc: Endeavour River. This species is common in the Cairns Region.

Fabaceae

Aphyllodium biarticulatum (L.) Gagnep.

Loc: Endeavour River. This species is common in the Cairns Region.

Cajanus reticulatus (Dryland.) F.Muell.

Loc: Endeavour River. This species occurs in the Cairns Region.

Canavalia rosea (Sm.) DC.

Loc: Endeavour River. This species is common in the Cairns Region.

Castanospermum australe A.Cunn.& Fraser ex Hook.

Loc: Endeavour River. This species is common in the Cairns Region.

Crotalaria calycina Schrank

Loc: Endeavour River. This species occur in the Cairns Region.

Crotalaria verrucosa L.

Loc: Endeavour River. This species occurs in the Cairns Region.

Dendrolobium umbellatum (L.) Benth.

Loc: Cape Grafton. This species is common in the Cairns Region.

Desmodium trichostachyum Benth.

Loc: Endeavour River and/or Cape Grafton. This species is common in the Cairns Region.

Eriosema chinense Vogel

Loc: Endeavour River. This species occurs in the Cairns Region.

Erythrina vespertilio Benth.

Loc: Endeavour River. This species occurs in the Cairns Region.

Galactia tenuiflora var. *lucida* Baker

Loc: Endeavour River. This species occurs in the Cairns Region.

Gompholobium nitidum Sol. ex Benth.

Loc: Endeavour River. This species occurs in the Cairns Region.

Glycine tomentella Hayata

Loc: Endeavour River. This species occurs in the Cairns Region.

Indigofera colutea (Burm.f.) Merr.

Loc: Endeavour River.

Indigofera linifolia (L.f.) Retz.

Loc: Endeavour River.

Indigofera pratensis F.Muell.
 Loc: Endeavour River. This species is common in the Cairns Region.

Jacksonia thesioides A.Cunn. ex Benth.
 Loc: Endeavour River. This species occurs in the Cairns Region.

Lamprolobium fruticosum Benth.
 Loc: Endeavour River.

Mucuna gigantea (Willd.) DC.
 Loc: Endeavour River. This species is common in the Cairns Region.

Ormocarpum orientale (Spreng.) Merr.
 Loc: Endeavour River.

Rhynchosia acuminatissima Miq.
 Loc: Endeavour River. This species occurs in the Cairns Region.

Smithia conferta Sm.
 Loc: Endeavour River.

Tephrosia brachyodon var. *brachyodon* Domin
 Loc: Endeavour River.

Tephrosia filipes subsp. *filipes* Benth.
 Loc: Endeavour River.

Tephrosia filipes subsp. *latifolia* Benth.
 Loc: Endeavour River. This species occurs in the Cairns Region.

Tephrosia juncea Benth.
 Loc: Endeavour River. This species is common in the Cairns Region.

Tephrosia leptoclada Benth.
 Loc: Endeavour River. This species occurs in the Cairns Region.

Tephrosia sp. (*Iron Range* L.J.Brass 19242)
 Loc: Endeavour River. This species occurs in the Cairns Region.

Tephrosia purpurea var. *sericea* Benth.
 Loc: Endeavour River. This species occurs in the Cairns Region.

Tephrosia reticulata R.Br. ex Benth
 Loc: Endeavour River.

Uraria lagopoides (L.) DC.
 Loc: Endeavour River. This species occurs in the Cairns Region.

Vandasina retusa (Benth.) Rauschert
 Loc: Endeavour River. This species is common in the Cairns Region.

Vigna lanceolata var. *filiformis* Benth.
 Loc: Endeavour River.

Vigna radiata var. *sublobata* (Roxb.) Verdc.
 Loc: Endeavour River. This species occurs in the Cairns Region.

Vigna vexillata var. *angustifolia* (Schumach. & Thonn.) Baker
 Loc: Cape Grafton & Endeavour River. This species occurs in the Cairns Region.

Gentianaceae

Canscora diffusa (Vahl.) R.Br. ex Roem. & Schult.
 Loc: Endeavour River. This species occurs in the Cairns Region

Goodeniaceae

Goodenia pilosa (R.Br.) Carolin
 Loc: Endeavour River. This species occurs in the Cairns Region.

Goodenia pumilio R.Br.
 Type Loc: Endeavour River.

Lechenaultia filiformis R.Br.
 Loc: Endeavour River.

Lamiaceae

Callicarpa pedunculata R.Br.
 Loc: Endeavour River. This species is common in the Cairns Region.

Clerodendrum costatum R.Br.
 Loc: Endeavour River.

Clerodendrum floribundum R.Br.
 Loc: Cape Grafton & Endeavour River. This species is common in the Cairns Region.

Clerodendrum inerme (L.) Gaertn.
 Loc: Endeavour River. This species is common in the Cairns Region.
Gmelina dalrympleana (F.Muell.) H.J. Lam.
 Loc: Cape Grafton & Endeavour River. This species is common in the Cairns Region.
Leucas decemdentata (Willd.) Sm.
 Loc: Endeavour River. This species occurs in the Cairns Region.
Plectranthus apreptus S.T.Blake
 Loc: Cape Grafton & Endeavour River. This species is common in the Cairns Region.
Plectranthus congestus R.Br.
 Loc: Endeavour River.
Plectranthus foetidus Benth.
 Loc: Endeavour River. This species is common in the Cairns Region.
Plectranthus graveolens R.Br.
 Loc: Endeavour River. This species occurs in the Cairns Region.
Premna serratifolia L.
 Loc: Cape Grafton. This species is common in the Cairns Region.
Teucrium argutum R.Br.
 Loc: Endeavour River. This species occurs in the Cairns Region.
Vitex rotundifolia L.f.
 Loc: Endeavour River. This species is common in the Cairns Region.

Lauraceae

Endiandra glauca R.Br.
 Loc: Endeavour River. This species is common in the Cairns Region.
Litsea breviumbellata C.K. Allen
 Loc: Cape Grafton & Endeavour River. This species is common in the Cairns Region.
Neolitsea brassii C.K. Allen
 Loc: Endeavour River. This species is common in the Cairns Region.

Lecythydaceae

Barringtonia calyptata (R.Br. ex Miers) R.Br. ex F.M.Bailey
 Loc: Lizard Island. This species is common in the Cairns Region.
Planchonia careya (F.Muell.) R.Knuth
 Loc: Cape Grafton. This species is common in the Cairns Region.

Lentibulariaceae

Utricularia albiflora R.Br.
 Loc: Endeavour River.
Utricularia caerulea L.
 Loc: Cape Grafton & Endeavour River. This species occurs in the Cairns Region.
Utricularia chrysantha R.Br.
 Loc: Endeavour River & Lookout Point.
Utricularia limosa R.Br.
 Loc: Endeavour River.
Utricularia minutissima Vahl.
 Loc: Cape Grafton.
Utricularia uliginosa Vahl.
 Loc: Cape Grafton & Endeavour River. This species occurs in the Cairns Region.

Loganiaceae

Mitrasacme ambigua R.Br.
 Loc: Endeavour River.
Mitrasacme connata R.Br.
 Loc: Endeavour River.
Mitrasacme laricifolia R.Br.
 Loc: Endeavour River.
Mitrasacme multicaulis R.Br.
 Loc: Endeavour River.
Mitrasacme phascoides R.Br.
 Loc: Endeavour River.
Mitrasacme polymorpha R.Br.
 Loc: Endeavour River. This species occurs in the Cairns Region

Mitrasacme pygmaea R.Br.
Loc: Cape Grafton. This species occurs in the Cairns Region.
Mitrasacme stellata R.Br.
Loc: Endeavour River. This species occurs in the Cairns Region.

Loranthaceae

Amyema biniflora Barlow
Loc: Endeavour River.
Decaisnina brittenii subsp. *brittenii* (Blakely) Barlow
Loc: Endeavour River. This species occurs in the Cairns Region.

Lythraeae

Ammannia baccifera L.
Loc: Endeavour River.
Ammannia multiflora Roxb.
Loc: Lookout Point. This species occurs in the Cairns Region.
Rotala mexicans Cham. & Schltl.
Loc: Endeavour River. This species occurs in the Cairns Region.
Rotala tripartita Beesley
Loc: Endeavour River.

Malvaceae

Abutilon albescens Miq.
Loc: Cape Grafton & Endeavour River. This species occurs in the Cairns Region.
Hibiscus meraukensis Hochr.
Loc: Cape Grafton & Endeavour River. This species is common in the Cairns Region.
Hibiscus normanii F. Muell.
Loc: Cape Grafton & Endeavour River. This species is common in the Cairns Region.

Melastomataceae

Melastoma malabathricum subsp. *malabathricum* L.
Loc: Endeavour River. This species is common in the Cairns Region.

Meliaceae

Xylocarpus granatum K.D.Koenig
Loc: Endeavour River. This species is common in the Cairns Region.

Menispermaceae

Hyserpa decumbens (Benth.) Diels
Loc: Endeavour River. This species is common in the Cairns Region.
Tinospora smilacina Benth.
Loc: Endeavour River. This species is common in the Cairns Region.

Mimosaceae

Acacia calyculata A.Cunn. ex Benth.
Loc: Endeavour River. This species is common in the Cairns Region.
Acacia holosericea A.Cunn. ex G.Don
Loc: Endeavour River. This species is common in the Cairns Region.
Acacia humifusa A.Cunn. ex Benth.
Loc: Endeavour River. This species occurs in the Cairns Region.
Acacia legnata Pedley
Loc: Endeavour River.
Acacia multsilqua (Benth.) Maconochie
Loc: Endeavour River.
Archidendron grandiflorum (Sol. ex Benth.) I.C. Nielsen
Loc: Endeavour River. This species is common in the Cairns Region.

Moraceae

Ficus obiqua G.Forst.
Loc: Endeavour River. This species occurs in the Cairns Region.
Ficus opposita Miq.
Loc: Cape Grafton. This species is common in the Cairns Region.
Ficus racemosa L.
Loc: Endeavour River. This species is common in the Cairns Region.
Ficus rubiginosa Desf. ex Vent.
Loc: Endeavour River. This species occurs in the Cairns Region.

Myristicaceae

Myristica globosa subsp. *muelleri* (Warb.) W.J.de Wilde

Loc: Endeavour River. This species is common in the Cairns Region.

Myrsinaceae

Aegiceras corniculatum (L.) Blanco

Loc: Endeavour River. This species is common in the Cairns Region

Myrsine urceolata R.Br.

Loc: Endeavour River. This species is common in the Cairns Region.

Myrtaceae

Asteromyrtus angustifolia (Gaertn.) Craven

Loc: Endeavour River.

Eucalyptus platyphylla F.Muell.

Loc: Endeavour River. This species is common in the Cairns Region.

Leptospermum polygalifolium Salisb.

Loc: Endeavour River. This species is common in the Cairns Region.

Lithomyrtus obtusa (Endl.) N. Snow & Guymer

Loc: Cape Grafton; Endeavour River & Lookout Point. This species is common in the Cairns Region.

Lophostemon suaveolens (Sol. ex Gaertn.) Peter G. Wilson & J.T. Waterh.

Loc: Endeavour River. This species is common in the Cairns Region.

Melaleuca arcana S.T. Blake

Loc: Lookout Point.

Melaleuca cajuputi subsp. *platyphylla* Barlow

Loc: Endeavour River & Possession Island. This species is common in the Cairns Region.

Melaleuca viminalis (Sol. ex Gaertn.) Byrnes

Loc: Endeavour River. This species is common in the Cairns Region.

Melaleuca viridiflora Sol. ex Gaertn.

Loc: Endeavour River. This species is common in the Cairns Region.

Neofabricia myrtifolia (Gaertn.) Joy Thomps.

Loc: Endeavour River.

Rhodomyrtus macrocarpa Benth.

Loc: Endeavour River. This species is common in the Cairns Region.

Syzygium banksii (Britten & S. Moore ex S.Moore) B.Hyland

Loc: Endeavour River. This species occurs at Yarrabah.

Syzygium suborbiculare (Benth.) T.G. Hartley & L.M. Perry

Loc: Endeavour River. This species occurs in the Cairns Region.

Thryptomene oligandra F.Muell.

Loc: Endeavour River & Lookout Point. This species occurs in the Cairns Region.

Nymphaeaceae

Nymphaea violacea Lehm.

Oleaceae

Chionanthus axillaris R.Br.

Loc: Endeavour River. This species is common in the Cairns Region

Onagraceae

Ludwigia octovalvis (Jacq.) P.H.Raven

Loc: Endeavour River. This species is common in the Cairns Region.

Passifloraceae

Passiflora aurantia var. *aurantia* G.Forst.

Loc: Endeavour River. This species is common in the Cairns Region.

Phyllanthaceae

Flueggea virosa subsp. *melanthesoides* (F. Muell.) G.L. Webster

Loc: Endeavour River. This species is common in the Cairns Region.

Phyllanthus dallachyanus Benth.

Loc: Endeavour River. This species occurs in the Cairns Region.

Picrodendraceae

Neoroepera banksii Benth.

Loc: Endeavour River.

Petalostigma banksii Britten & S.Moore

Piperaceae

Piper caninum Blume

Loc: Cape Grafton & Endeavour River. This species is common in the Cairns Region.

Pittosporaceae

Pittosporum ferrugineum subsp. *linifolium* (A.Cunn.) L.W.Cayzer, Crisp & I.Telford

Loc: Palm Island. This species is common in the Cairns Region.

Polygalaceae

Comesperma secundum Banks ex DC.

Loc: Endeavour River.

Polygala exsuarrosa Adema

Loc: Endeavour River. This species occurs in the Cairns Region.

Polygala linariifolia Willd.

Loc: Endeavour River.

Polygala longifolia Poir.

Loc: Endeavour River. This species occurs in the Cairns Region.

Polygala rhinanthoides Sol.ex Benth.

Loc: Endeavour River. This species occurs in the Cairns Region.

Salomonina ciliata (L.) DC.

Loc: Endeavour River. This species occurs in the Cairns Region.

Polygonaceae

Muehlenbeckia rhyticarya F.Muell.

Loc: Endeavour River. This species occurs in the Cairns Region.

Persicaria attenuata (R.Br.) Sojak

Loc: Endeavour River. This species is common in the Cairns Region.

Portulacaceae

Calandrinia arenicola Syeda

Loc: Endeavour River.

Portulaca bicolor F.Muel.

Loc: Endeavour River. This species occurs in the Cairns Region.

Proteaceae

Banksia aquilonia (A.S.George) A.S.George

Loc: Endeavour River. This species is common in the Cairns Region.

Banksia dentata L.f.

Loc: Endeavour River. This species occurs in the Cairns Region.

Grevillea glauca Banks & Sol. ex Knight

Loc: Endeavour River. This species is common in the Cairns Region.

Grevillea parallela Knight

Loc: Endeavour River. This species is common in the Cairns Region.

Grevillea pteridifolia Knight

Loc: Endeavour River & Lookout Point. This species occurs in the Cairns Region.

Persoonia falcata R.Br.

Loc: Endeavour River. This species is common in the Cairns Region.

Rhizophoraceae

Carallia brachiata (Lour.) Merr.

Loc: Endeavour River. This species is common in the Cairns Region.

Rhizophora mucronata Lam.

Loc: Endeavour River. This species is common in the Cairns Region.

Rubiaceae

Cyclophyllum rostellatum S.T. Reynolds & R.J.F. Hend.

Loc: Endeavour River.

Ixora timorensis Decne.

Loc: Endeavour River. This species is common in the Cairns Region.

Knoxia sumatrensis (Retz.) DC.

Loc: Palm Island. This species occurs in the Cairns Region.

Morinda citrifolia L.
 Loc: Endeavour River. This species is common in the Cairns Region.
Morinda reticulata Benth.
 Loc: Endeavour River.
Myrmecodia beccarii Hook.f.
 Loc: Endeavour River. This species is common in the Cairns Region.
Oldenlandia biflora L.
 Loc: Endeavour River. This species occurs in the Cairns Region.
Oldenlandia mitrasacmoides subsp. nigicans Halford
 Loc: Endeavour River.
Psychotria polioSTEMMA Benth.
 Loc: Endeavour River.
Psydrax banksii S.T.Reynolds & R.J.Hend.
 Loc: Endeavour River. This species is common in the Cairns Region.
Scyphiphora hydrophylacea (Hook. & Arn.) H.S.Irwin & Barneby
 Loc: Endeavour River. This species is common in the Cairns Region.
Timonius timon (Spreng.) Merr.
 Loc: Endeavour River. This species is common in the Cairns Region.

Rutaceae

Boronia alulata Sol. ex Benth.
 Loc: Endeavour River.
Eriostemon banksii A. Cunn. ex Endl.
 Loc: Endeavour River.
Micromelum minutum (G.Forst.) Wight & Arn.
 Loc: Endeavour River. This species is common in the Cairns Region.

Santalaceae

Anthobolus filifolius R.Br.
 Loc: Endeavour River.
Santalum lanceolatum R.Br.
 Loc: Endeavour River. This species occurs in the Cairns Region.

Sapindaceae

Distichostemon hispidulus var. *hispidulus* (Endl.) Baill.
 Loc: Endeavour River.
Dodonaea lanceolata var. *subsessilifolia* J.G. West
 Loc: Lookout Point. This species is common in the Cairns Region.
Dodonaea polyandra Merr. & L.M. Perry
 Loc: Cape Grafton & Lookout Point. This species is common in the Cairns Region.
Dodonaea vestita (Hook.)
 Loc: Endeavour River.

Sapotaceae

Planchonella obovata (R.Br.) Pierre
 Loc: Endeavour River. This species is common in the Cairns Region

Scrophulariaceae

Adenosma caerulea R.Br.
 Loc: Endeavour River.
Buchnera linearis R.Br.
 Loc: Endeavour River.
Buchnera tetragona R.Br.
 Loc: Endeavour River.
Centranthera cochinchinensis (Lour.) Merr.
 Loc: Endeavour River.
Lindernia crustacea (L.) F.Muell.
 Loc: Endeavour River. This species is common in the Cairns Region.
Lindernia subulata R.Br.
 Loc: Endeavour River.
Mimulus uvedaliae Benth.
 Loc: Endeavour River.

Striga curviflora (R.Br.) benth.

Loc: Endeavour River.

Solanaceae

Solanum viridifolium Dunal

Loc: Cape Grafton & Endeavour River. This species is common in the Cairns Region.

Sparrmanniaceae

Triumfetta repens (Blume) Merr. & Rolfe

Loc: Endeavour River. This species is common in the Cairns Region.

Stylidiaceae

Stylidium alsinoides R.Br.

Type Loc: Endeavour River. This species occurs in the Cairns Region.

Stylidium capillare R.Br.

Type Loc: Endeavour River.

Stylidium fissilobum F.Muell.

Loc: Endeavour River.

Stylidium pedunculatum R.Br.

Type Loc: Endeavour River.

Stylidium rotundifolium R.Br.

Loc: Endeavour River. This species occurs in the Cairns Region.

Stylidium tenerum Spreng.

Loc: Endeavour River. This species occurs in the Cairns Region.

Thymelaeaceae

Thecanthes cornucopiae (Vahl.) Wilkstr.

Loc: Cape Grafton. This species is common in the Cairns Region.

Ulmaceae

Celtis paniculata (Endl.) Planch.

Loc: Endeavour River. This species is common in the Cairns Region.

Urticaceae

Dendrocnide moroides (Wedd.) Chew

Loc: Endeavour River. This species is common in the Cairns Region.

Pipturus argenteus (G.Forst.) Wedd.

Loc: Endeavour River. This species is common in the Cairns Region.

Violaceae

Hybanthus enneaspermus (L.) F. Muell.

Loc: Endeavour River. This species is common in the Cairns Region.

Vitaceae

Clematicissus opaca (F.Muell.) Jackes & Rossetto

Loc: Endeavour River.

Leea indica (Burm.f.) Merr.

Loc: Endeavour River. This species is common in the Cairns Region.

Zygophyllaceae

Tribulopsis solandri R.Br.

Loc: Endeavour River.

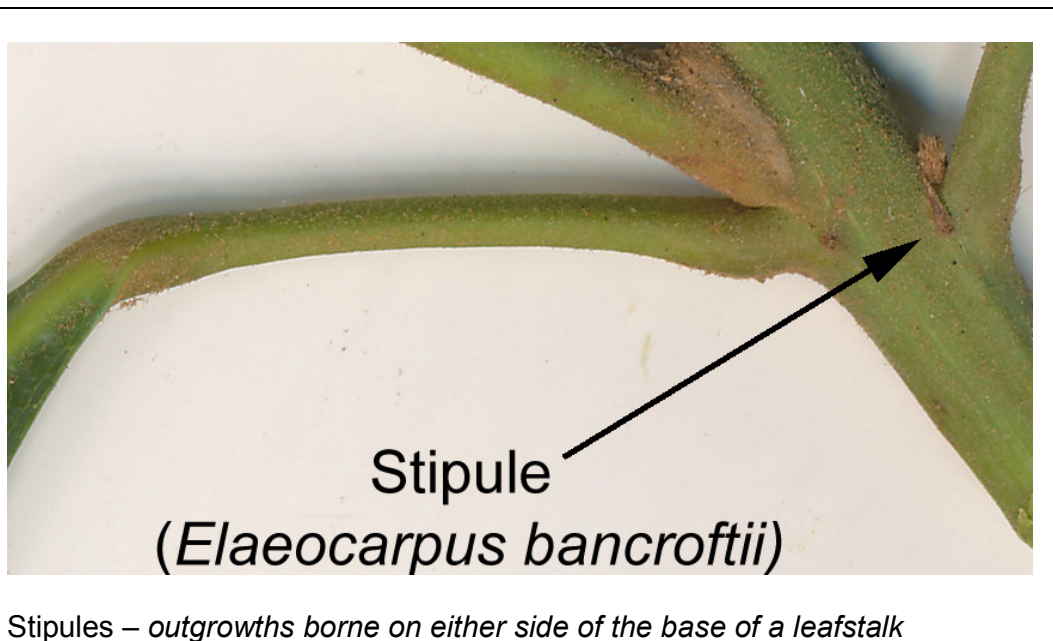
Meet the Locals

As this is the 100th issue of our Cairns Branch Newsletter, it's probably time to have a look at our floral emblem *Elaeocarpus bancroftii* and its relatives in the Elaeocarpaceae.

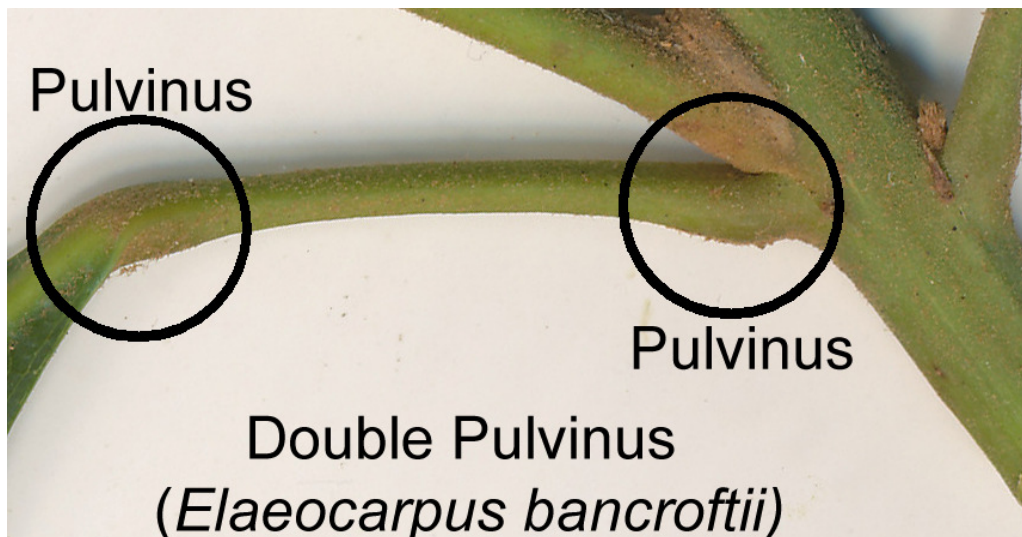
Elaeocarpaceae contains about twelve genera, with about eight occurring in Australia. Only four genera occur in the Cairns area:

Aceratium
Elaeocarpus
Peripentadenia and
Sloanea

The Elaeocarpaceae occur around the tropics but are absent from the African continent. They are trees or shrubs, with either alternate or opposite, stipulate, simple (undivided) leaves.

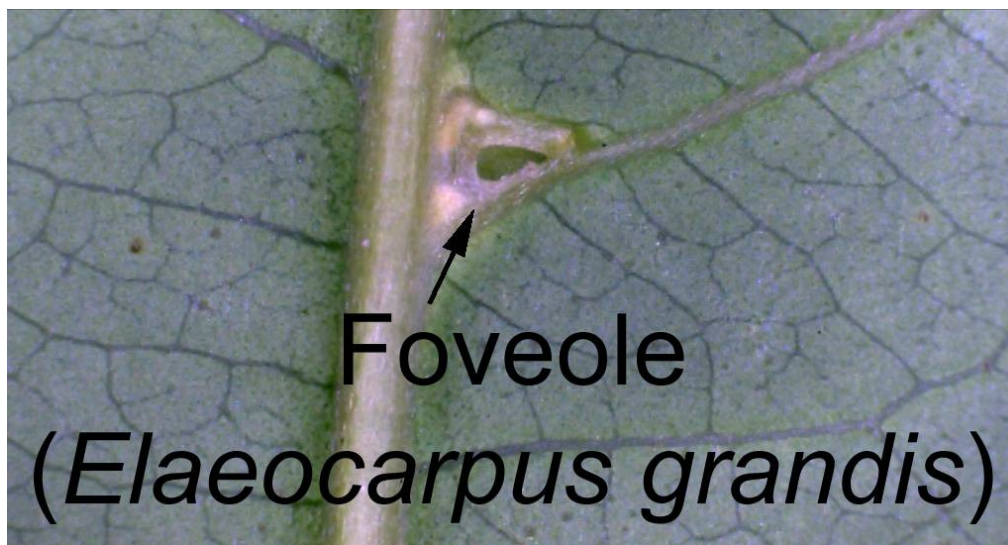


Leaf margins are often toothed and most species have pulvini (swelling) at the blade-petiole and petiole-branch junctions, often called a double pulvinus.



Pulvinus – a joint-like thickening at the base of a plant leaf or leaflet that facilitates nyctinastic and thigmonastic movements

Domatia are common in the family and occur as foveoles.



Domatia – are found on the lower surface of leaves in the forks of the midrib and the main lateral veins and occasionally in the forks of the lateral vein branches. They take two main forms, either conspicuous little tufts of hair or small hooded enclosures. The latter are often referred to as 'foveoles'. Domatia are produced by the plant to house arthropods, usually ants or mites, in what is believed to be a mutualistic relationship. Other arthropods such as thrips do sometimes take advantage of the plant's generous offer however. The word 'domatia' comes from the Latin domus meaning home.

Identification characters of Elaeocarpaceae:

- Tree or shrub
- Simple, alternate leaves
- Stipules/stipular scars usually visible
- Leaf margins often toothed
- Double pulvini usually present
- Domatia common
- Old leaves turn red prior to falling

The Elaeocarpaceae of Mt Whitfield Three species of Elaeocarpaceae occur on Mt. Whitfield; they occur in two genera. All three are all trees

Elaeocarpus bancroftii, Kuranda

Quandong occurs in rainforest between Cooktown and Tully from sea level to about 1200m. It is a large tree to 25m tall.

Leaves are leathery to 130 x 50mm with little or no teeth along the margin and are without domatia. Old leaves turn red prior to falling and are conspicuous on the forest floor beneath the tree's canopy.

Flowers are creamish, bell shaped to about 15mm long with four, lobed petals.

Fruit is single seeded, fleshy (drupe) and blue/green when ripe to 40mm in diameter. The nut is enclosed in a hard woody endocarp. The kernel has a pleasant nutty flavour but is difficult to extract Empty kernels are often seen below parent trees; the result of native rat feeding.

The nut of this species was important in the diet of the local Aboriginal inhabitants.





Forest & Kim Starr



Elaeocarpus
© JB Friday



Elaeocarpus grandis Silver Quandong is a large tree to 40m+ tall, usually with well developed buttresses. It occurs in rainforest, often along streams, between the Northern Territory and northern NSW and overseas. Altitudinal range is between sea level and about 1100m.

The thin textured leaves, to 150 x 45mm, have up to 55 teeth along each edge, domatia in the forks of the lateral veins and midrib and in the lateral vein forks and no pulvini. Old leaves turn red prior to falling and are conspicuous on the forest floor beneath the tree's canopy.

Flowers are creamish, bell shaped to about 14mm long with five, lobed petals.

The iridescent blue fruit to 23mm in diameter contains 2 to 5 seeds protected by an ornately pitted endocarp.

The flesh of the Silver Quandong fruit is edible and not unpleasant when slightly over ripe but bitter when immature.

Sloanea langii White Carabeen occurs in rainforest between Cape York and central coastal Queensland from sea level to about 1150m. It is a large tree, usually buttressed.

Leaves are stiff to 150 x 60mm with coarse teeth along the margin (usually) and domatia on the undersurface.

Flowers are creamish, about 30mm wide with numerous stamens.

Fruit is bristly about 15 x 12mm. The small (8 x 4mm) seeds are enclosed in an orange aril.



Other indigenous Elaeocarpaceae of the greater Cairns area

<i>Aceratium concinnum</i>		Hard Carabeen	
<i>Aceratium doggrellii</i>		Buff Carabeen	
<i>Aceratium ferrugineum</i>		Rusty Carabeen	Rare
<i>Aceratium megalospermum</i>		Bolly Carabeen	
<i>Elaeocarpaceae</i> sp	(Windsor Tableland L.W. Jessup+GJM1378)	Jessup's Quandong	
<i>Elaeocarpus arnhemicus</i>		Bony Quandong	
<i>Elaeocarpus carolinae</i>		Carol's Quandong	Rare
<i>Elaeocarpus coorangooloo</i>		Brown Quandong	Rare
<i>Elaeocarpus elliffi</i>		Quandong	
<i>Elaeocarpus eumundii</i>		Eumundii Quandong	
<i>Elaeocarpus ferruginiflorus</i>		Northern Quandong	
<i>Elaeocarpus foveolatus</i>		Northern Quandong	
<i>Elaeocarpus grahamii</i>		Graham's Quandong	
<i>Elaeocarpus johnsonii</i>		Johnson's Quandong	Rare
<i>Elaeocarpus largiflorens</i>	subsp. <i>largiflorens</i>	Tropical Quandong	
<i>Elaeocarpus largiflorens</i>	subsp. <i>retinervis</i>	Quandong	
<i>Elaeocarpus linsmithii</i>		Smith's Quandong	
<i>Elaeocarpus michaeli</i>		Michael's Quandong	
<i>Elaeocarpus ruminatus</i>		Brown Quandong	
<i>Elaeocarpus sericopetalus</i>		Hard Quandong	
<i>Elaeocarpus</i> sp	(Mossman Bluff D. G. Fell DF1666)	Bluff Quandong	
<i>Elaeocarpus</i> sp	(Mt. Bellenden Ker L.J. Brass 18336)	Mt. Bellenden Quandong	
<i>Elaeocarpus</i> sp	(Mt. Lewis B.P. Hyland 2907)	Mt. Lewis Quandong	
<i>Elaeocarpus</i> sp	(Mt. Missery L. J. Webb+ 10905)	Mt. Missery Quandong	
<i>Elaeocarpus stellaris</i>		Quandong	Rare
<i>Elaeocarpus thelmae</i>		Thelma's Quandong	Rare
<i>Peripentadenia mearsii</i>			Rare
<i>Peripentadenia phelpsi</i>		Mossman Quandong	Rare
<i>Sloanea australis</i>	subsp. <i>parviflora</i>	Maiden's Blush; Cudgerie	
<i>Sloanea macbrydei</i>		Grey Carabeen	